

KEY FEATURES

Cost-effective integrated system for wetland delineation determination

Meets U.S. Army Corps of Engineer wetland delineation manual requirements

Streamlined routine Wetland Determination form creation and submittal

Nationwide coverage, all regional supplements supported

Efficient field data collection system with a Juno SB handheld and the WetCollect mobile software

Handheld solution includes 3 Megapixel camera, high-sensitivity GPS receiver, and a long life battery for all day use in the field

Data and forms management with WetCollect hosted server saves time and eliminates paperwork



COLLECT AND PROCESS WETLAND DELINEATION DATA IN THE FIELD WITH THE WETCOLLECT SYSTEM ON TRIMBLE JUNO SB HANDHELDS

Environmental professionals are frequently required to perform wetland delineations as part of a due diligence or site planning process. During this process, field data on vegetation, hydrology, and soils is collected per the US Army Corps of Engineers (COE) 1987 Wetland Delineation Manual and subsequent Regional Supplements. This data is often collected through handwritten field notes and then manually entered into the appropriate data form on a computer before being printed out for submission to the COE with the wetland delineation package in order

to obtain a Jurisdictional Determination (JD). Now, using the WetCollect system combining the WetCollect software with the affordable Trimble® Juno™ SB handheld, field workers can perform this process digitally, leaving pen and paper behind, thus making the data collection and submission process more efficient and more accurate. Comprised of easy-to-use mobile software, a hosted secure server with a web interface, and a GPS handheld, the WetCollect system allows you to manage your data more efficiently from field to submission.



Using the WetCollect mobile software on a Juno SB handheld, reduce reporting time by up to 50% when collecting wetland data in the field.

WETCOLLECT SYSTEM WITH JUNO SB

ELIMINATE PAPERWORK AND MEET REGULATORY REQUIREMENTS

On-the-spot completion of forms directly on the handheld eliminates the need to take handwritten notes—just enter data once avoiding the need to write it up later for submittal with a Jurisdictional Determination package. With one click the data is transmitted to the database on the WetCollect hosted server. In addition, the built-in data dictionary automatically provides you with the proper attributes to record in the field, eliminating the need to keep up with changing standards.

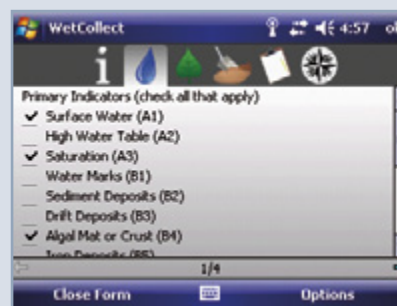
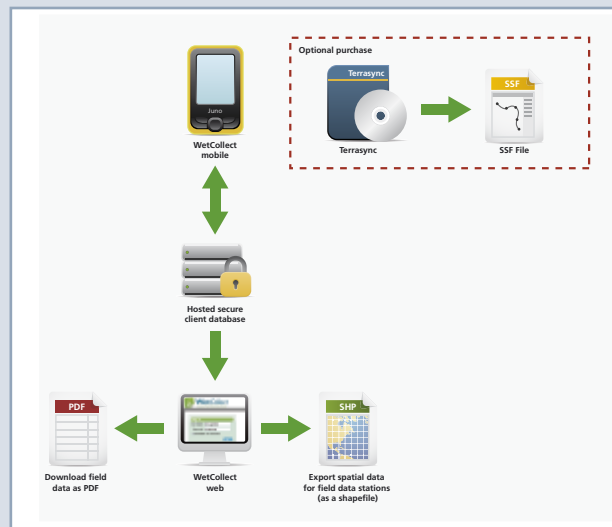
WORK EFFICIENTLY IN THE FIELD WITH THE TRIMBLE JUNO

Combining a high-yield GPS receiver with 2 to 5 meter positioning accuracy, Windows Mobile® software, 533 MHz processor, 3.5 inch display, and 3 megapixel camera—the Juno SB handheld is built for field operations and multi-tasking. Using the WetCollect mobile software on your Juno SB handheld you can easily log data points and real-time coordinates, allowing you to revisit exact locations during confirmation visits.

MANAGE DELINEATION DATA SEAMLESSLY WITH THE WETCOLLECT HOSTED SERVER

Your data is conveniently backed up on the WetCollect hosted server. Your projects and data forms can be accessed at any time via a secure login to the WetCollect web interface. Once logged in you can easily access data and print, email, or save your updated delineation data form as a PDF. You can synchronize data from multiple devices in one location to manage diverse projects and multiple field worker data uploads on the WetCollect hosted server and file projects there for convenient access at a later time. You also have the ability to protect and unprotect active forms and archive completed projects to ensure their safe keeping.

For more information go to www.trimble.com/wetcollect, email mgis_info@trimble.com, or contact your local Trimble reseller. To order your Juno SB handheld with the WetCollect system, visit store.trimble.com.



© 2010, Trimble Navigation Limited. All rights reserved. Trimble and the Globe & Triangle logo are trademarks of Trimble Navigation Limited, registered in the United States and in other countries. Juno is a trademark of Trimble Navigation Limited. The Bluetooth word mark and logos are owned by the Bluetooth SIG, Inc. and any use of such marks by Trimble Navigation Limited is under license. Windows Mobile is either a registered trademark or trademark of Microsoft Corporation in the United States and/or other countries. All other trademarks are the property of their respective owners. PN 022501-241 (05/10)

NORTH & SOUTH AMERICA

Trimble Navigation Limited
10355 Westmoor Drive
Suite #100
Westminster, CO 80021
USA
+1-720-587-4574 Phone
+1-720-587-4878 Fax

EUROPE & AFRICA

Trimble Germany GmbH
Am Prime Parc 11
65479 Raunheim
GERMANY
+49-6142-2100-0 Phone
+49-6142-2100-550 Fax

ASIA-PACIFIC & MIDDLE EAST

Trimble Navigation
Singapore PTE Limited
80 Marine Parade Road
#22-06 Parkway Parade
Singapore, 449269
SINGAPORE
+65-6348-2212 Phone
+65-6348-2232 Fax

YOUR LOCAL TRIMBLE OFFICE OR REPRESENTATIVE



www.trimble.com
store.trimble.com